

From cleaning to fintech: *Where are Greek women today?*

**National Survey Results
2025**





Contents...



Women and society:

Perceptions – Stereotypes – Equality



Women and work

Careers – Opportunities – Leadership



Women and safety

Bullying – Internalized misogyny

Research specifications



*The survey was conducted on behalf of **GAME OF MONEY**
and presented with a multifactorial analysis
at a special event **at the Athens Concert Hall**,
as part of the **GAME OF MONEY FESTIVAL 2025**
(15 November 2025)*

Online interviews via YouGov panel

Structured questionnaire

Population: Men & Women aged 18+, nationwide

Representative sample: 1,000 people.

Conducted: May 2025

Focus Bari is YouGov's Affiliate Partner in Greece (www.yougov.com)



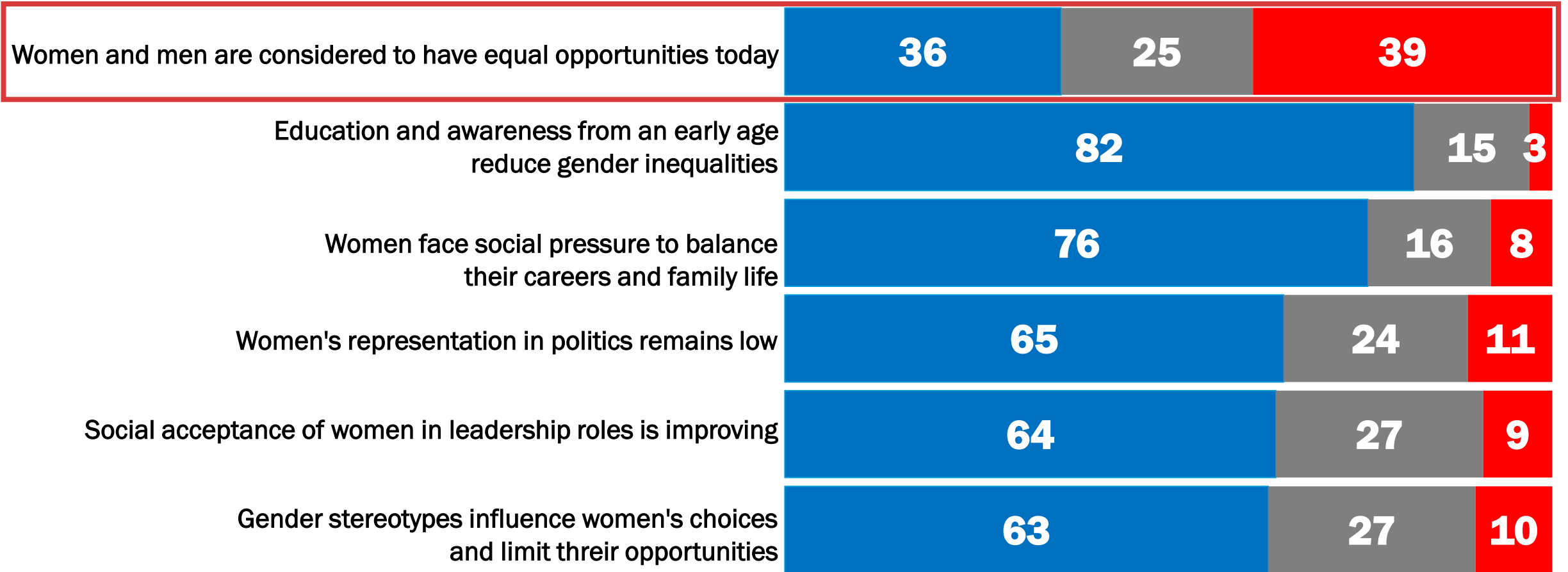
SECTION A: Women & Society

Perceptions – Stereotypes – Equality



Progress and contradictions in social perceptions of gender:

2 in 5 Greeks question gender equality

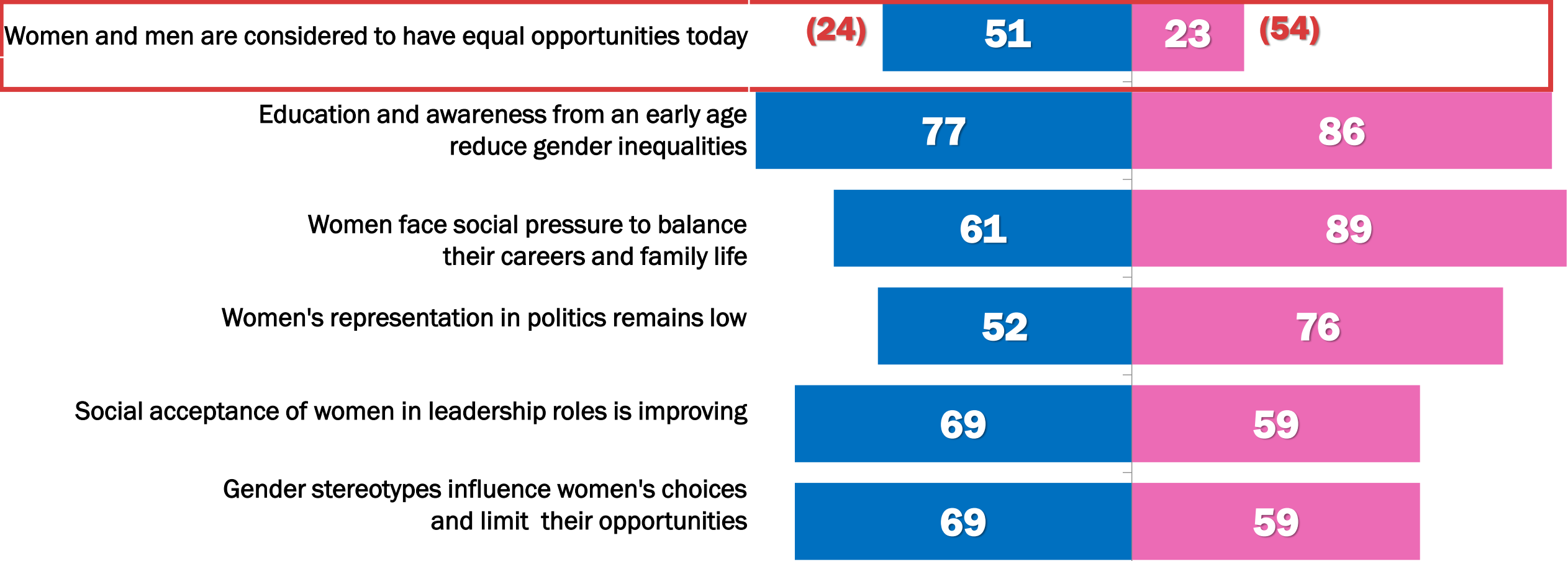


■ Agree (strongly / somewhat) ■ Neither agree nor disagree ■ Disagree (strongly/somewhat)

Common context, different experiences: women's perspective on social roles and opportunities is more critical



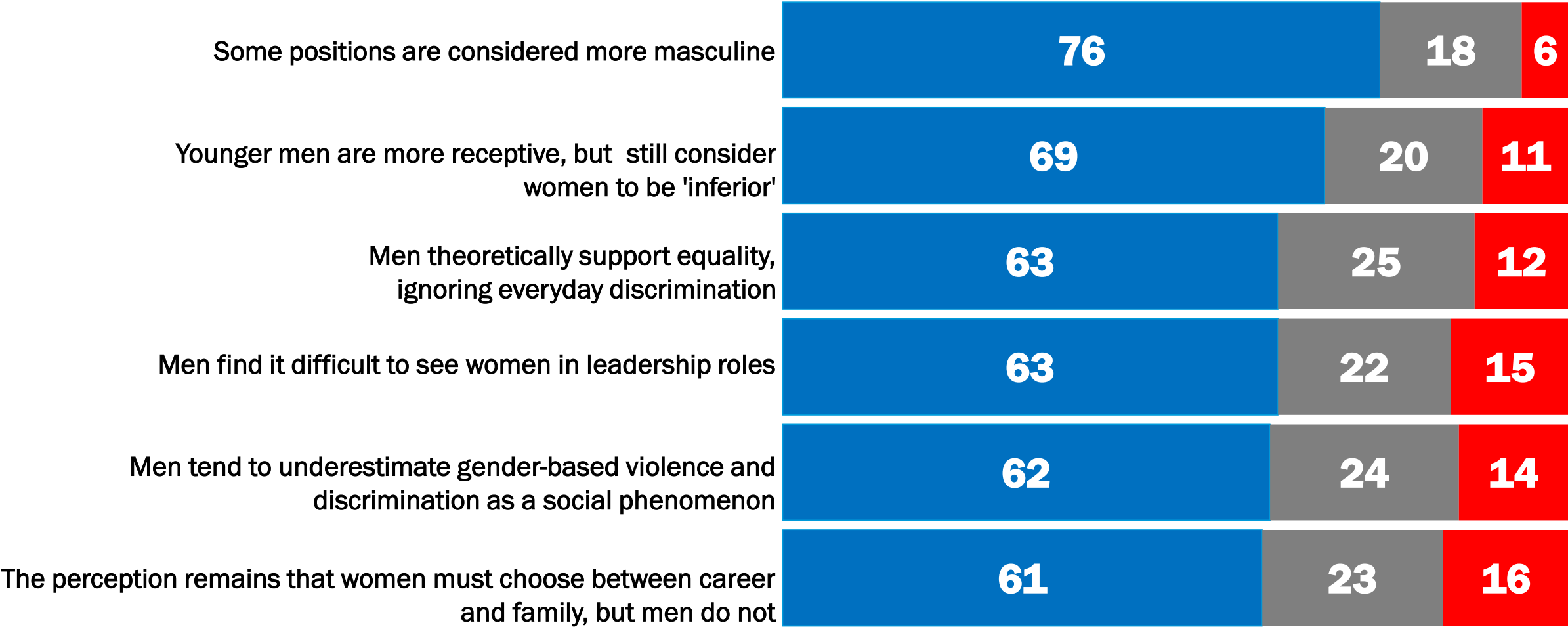
%



(Percentage of disagreement in parentheses)

Male perceptions of equality:

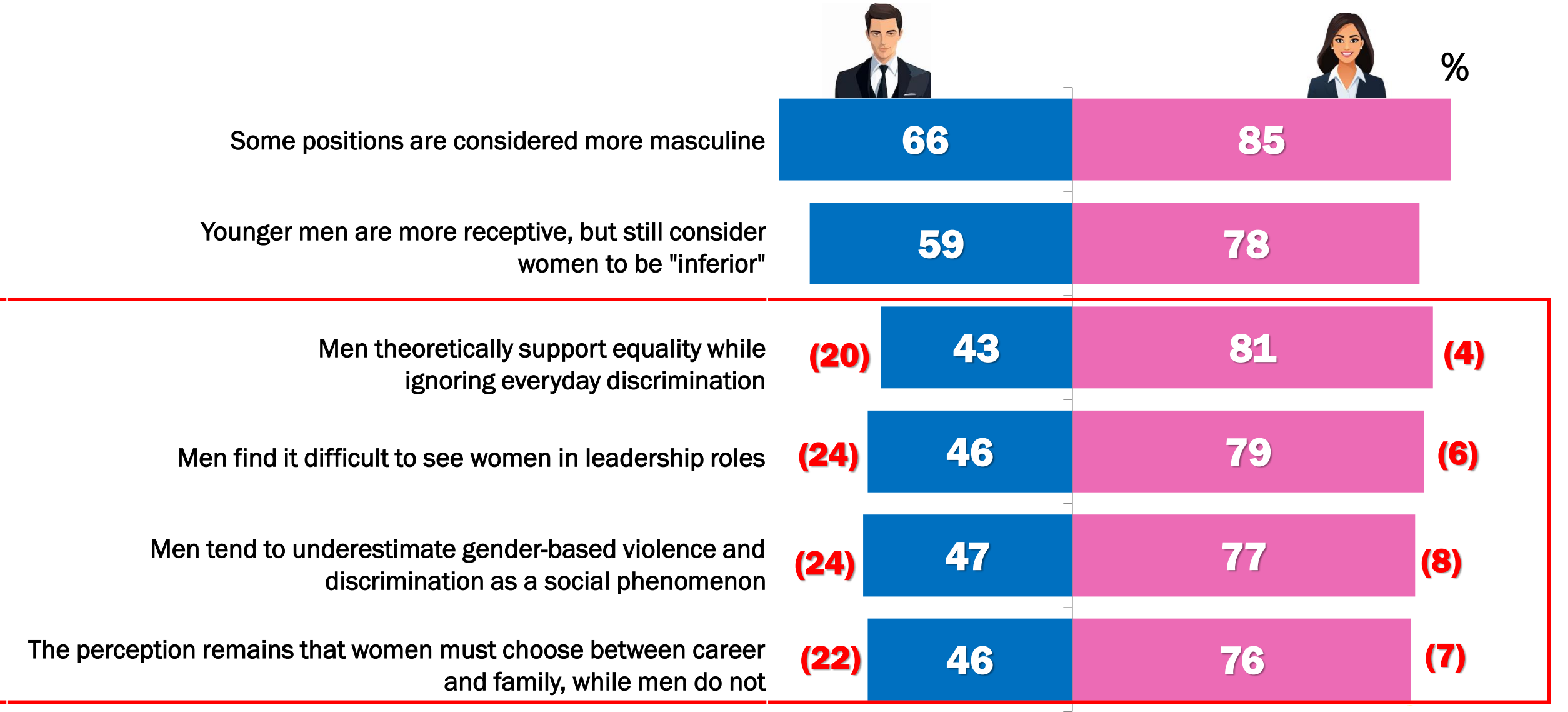
Theory vs practice shaped by persistent stereotypes



■ Agree (strongly / somewhat) ■ Neither agree nor disagree ■ Disagree (strongly/somewhat)

Same issues, different perspectives:

Women's views are more critical than men's



(Percentage of disagreement in parentheses)

SAME ENVIRONMENT DIFFERENT PERSPECTIVE



1 Key Learning

Equality is recognised as a fundamental principle by both genders, while the cultivation of attitudes and values from an early age is widely considered necessary.

In practice, however, traditional perceptions remain active, with women more often experiencing them as a limiting factor in their personal and social development.

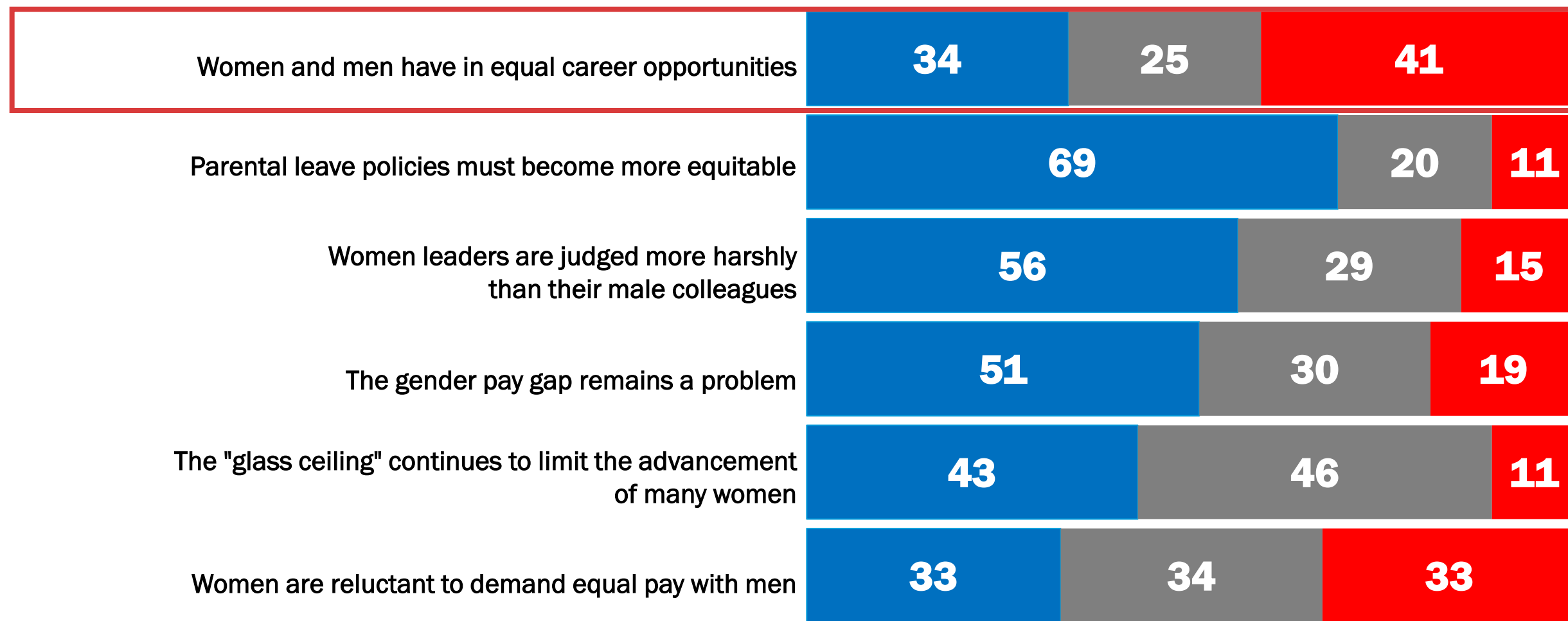
SECTION B: Women & Work

Career – Opportunities – Leadership



Professional equality: Expectation or everyday reality?

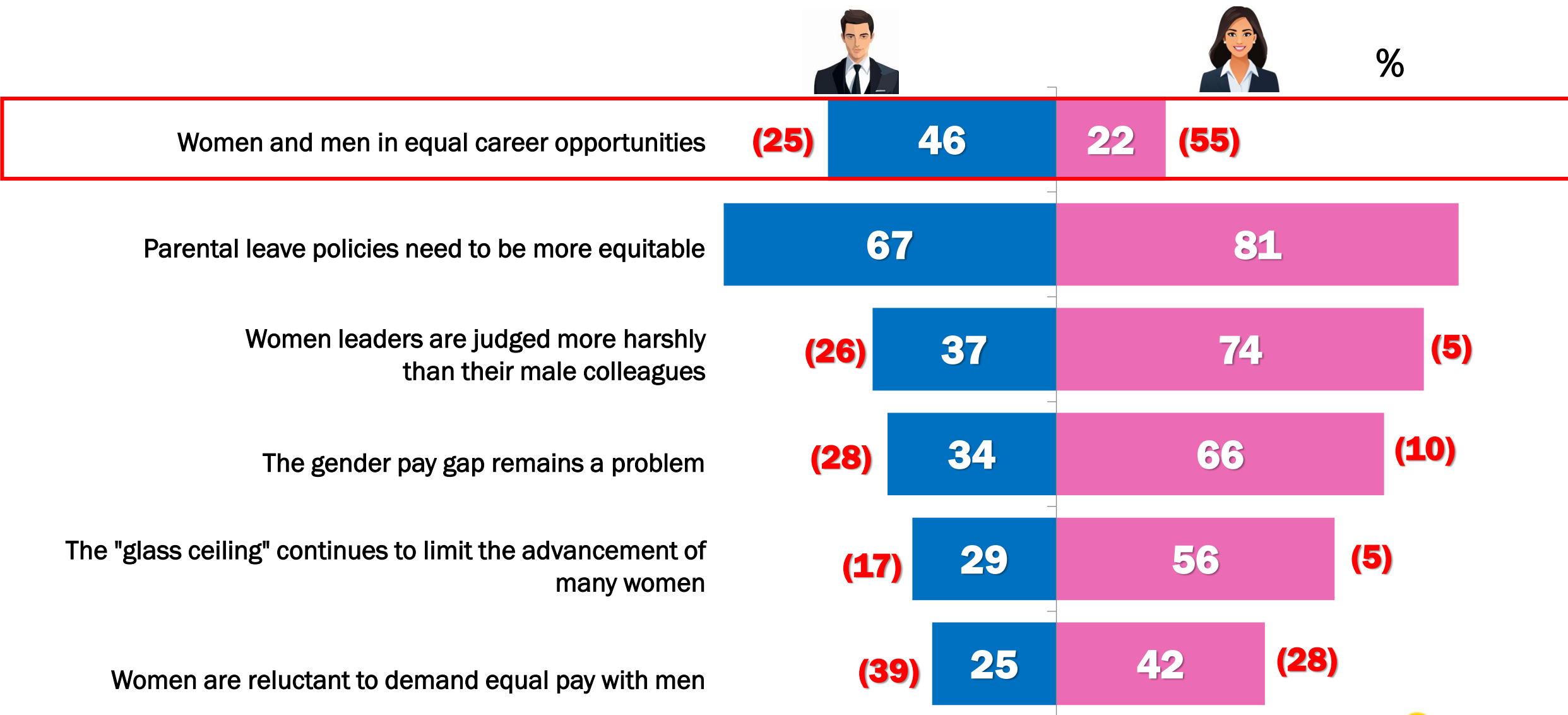
2 in 5 Greeks do not believe in equal career opportunities



■ Agree (strongly / somewhat) ■ Neither agree nor disagree ■ Disagree (strongly/somewhat)

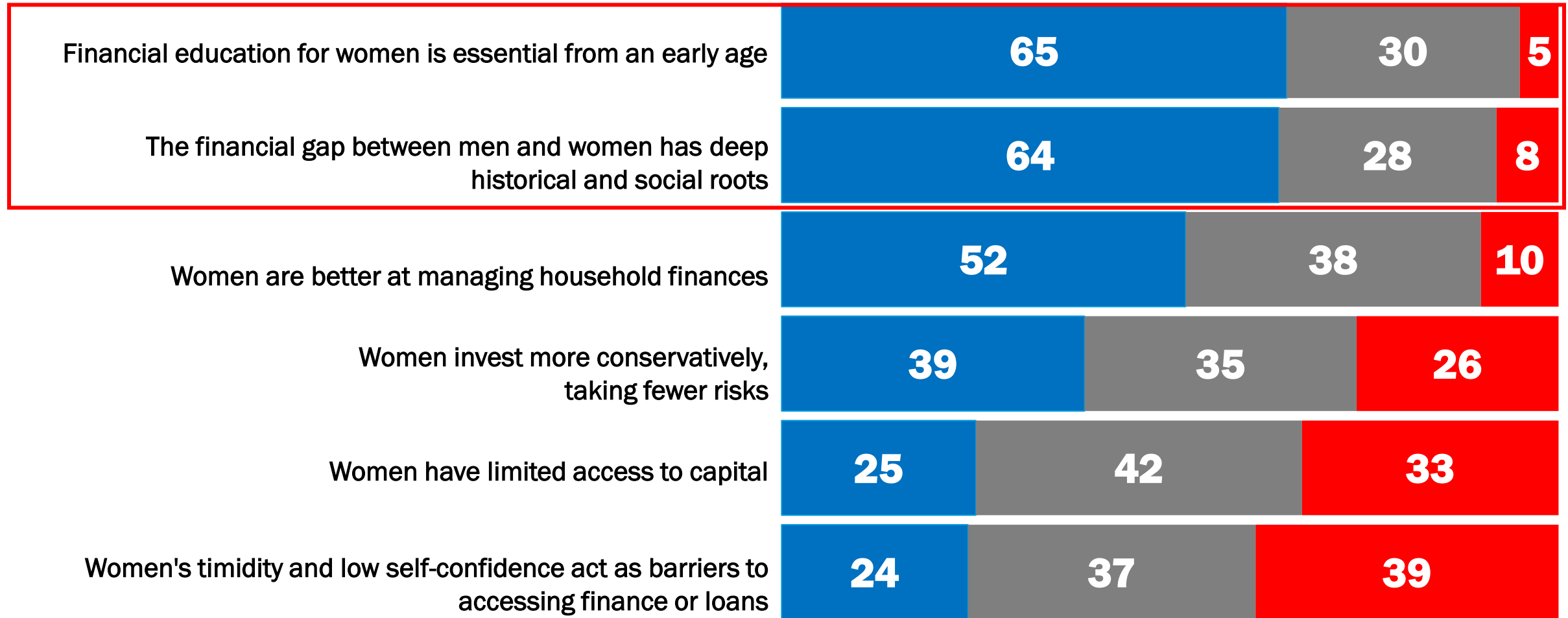
Men's perception vs women's experience

Professional inequalities in practice – more evident for women



(Percentage of disagreement in parentheses)

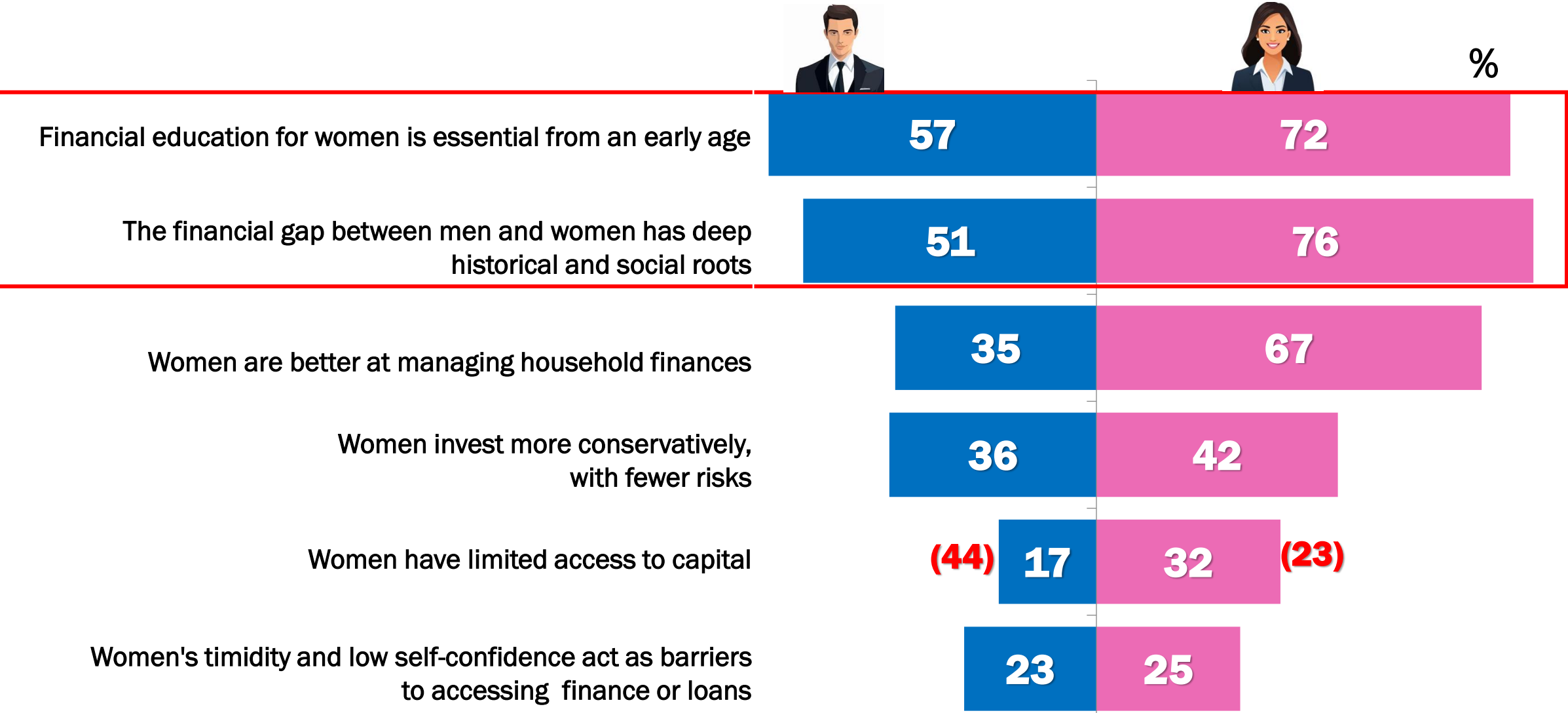
Money and gender: Recognition of structural inequalities and ambivalence in behaviour and self-perception



■ Agree (strongly / somewhat) ■ Neither agree nor disagree ■ Disagree (strongly/somewhat)

Inequality in the wallet:

The economic gap is more evident among women



(Percentage of disagreement in parentheses)

SAME ENVIRONMENT DIFFERENT PERSPECTIVE



#2 Key Learning

Women's position in the workplace appears weaker in terms of career development and economic opportunities.

The gap is more strongly perceived by women, while the need for financial education is recognised as essential by both genders.

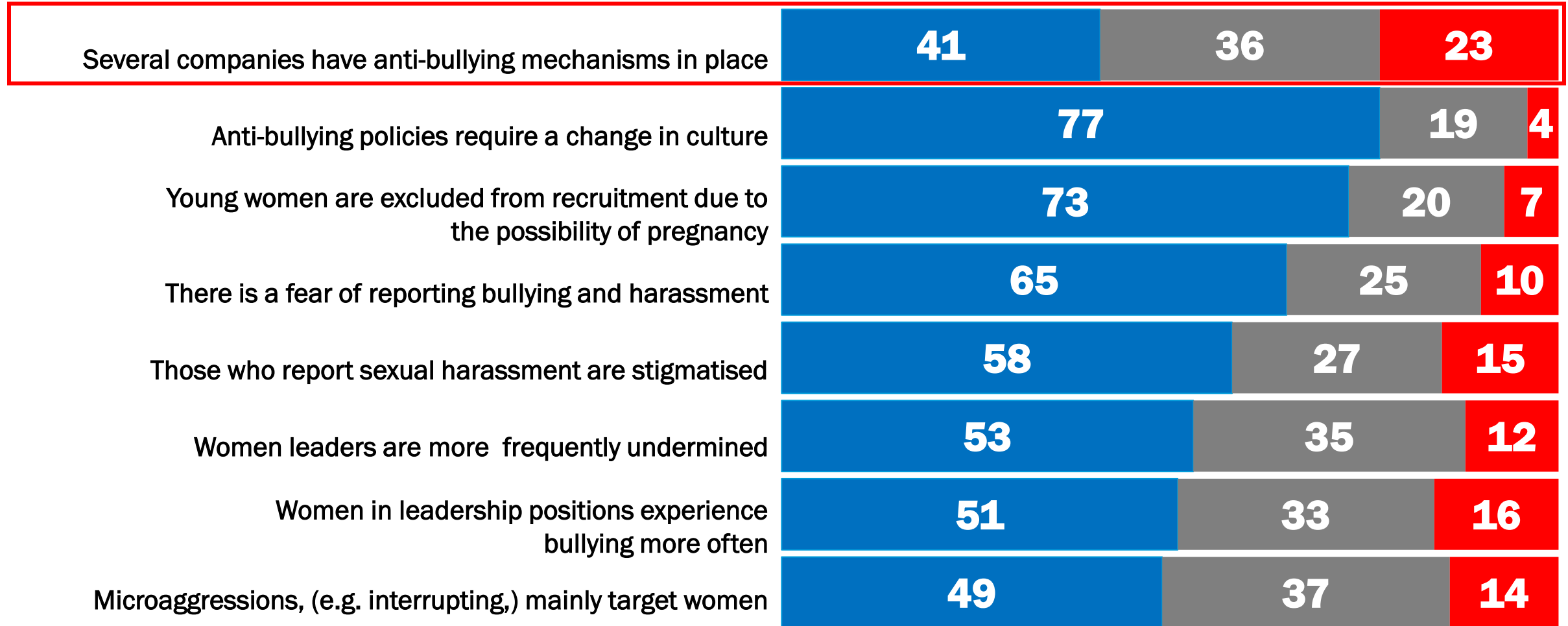
SECTION C: Women & Safety

Bullying – Internal misogyny



Bullying in the workplace:

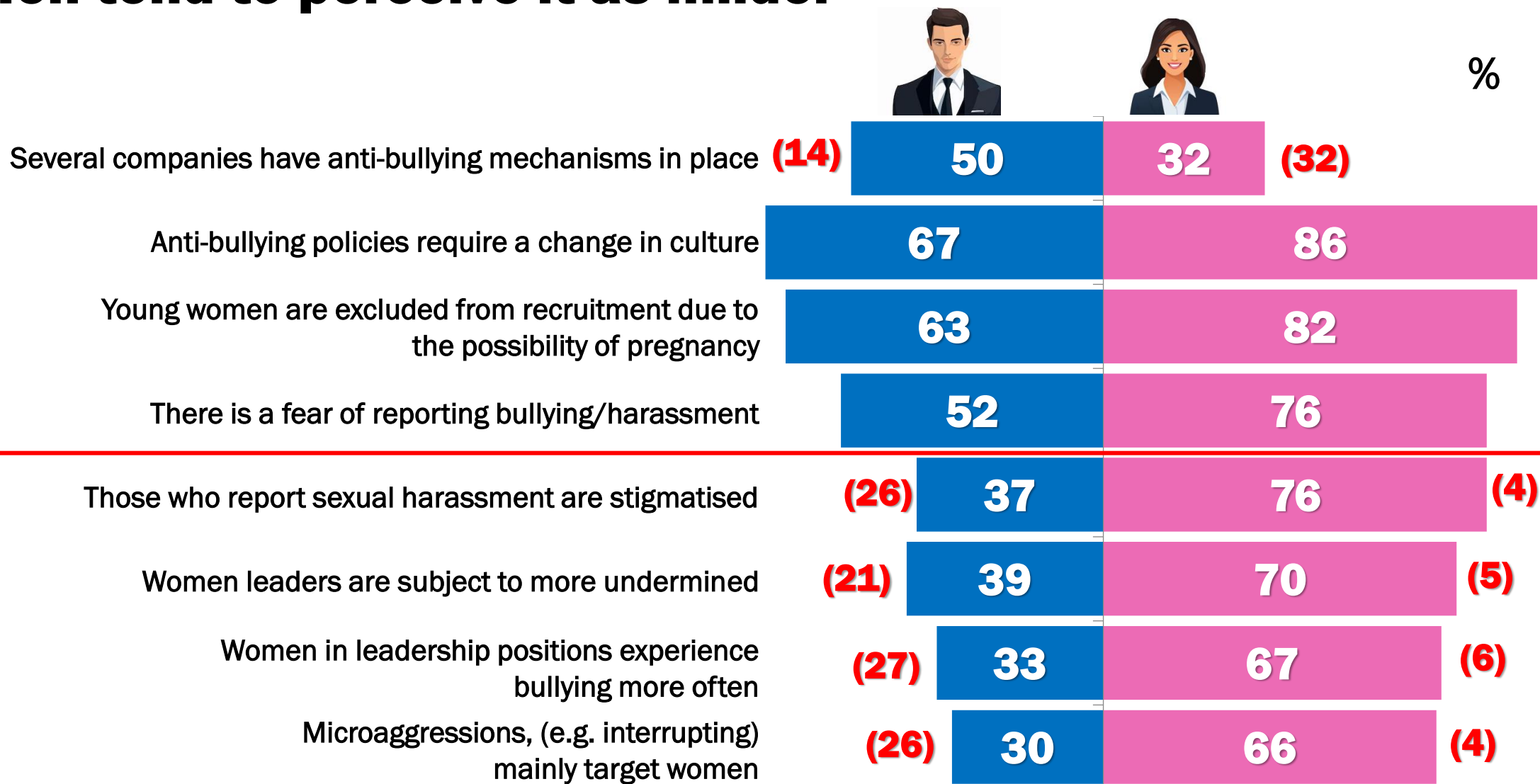
gender inequalities that remain invisible in regulations



■ Agree (strongly / somewhat) ■ Neither agree nor disagree ■ Disagree (strongly/somewhat)

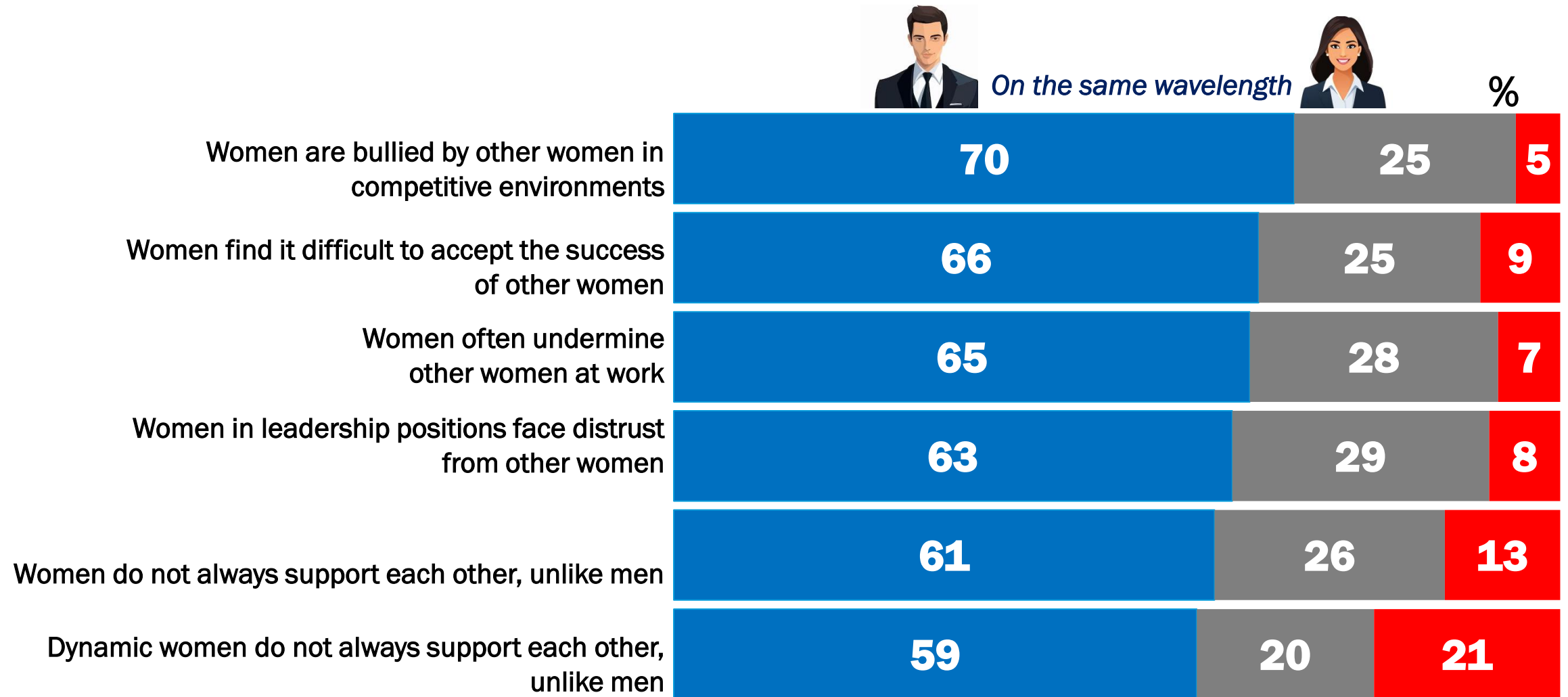
Two realities of workplace bullying

Men tend to perceive it as milder



(Percentage of disagreement in parentheses)

The invisible dynamic undermining: competition between women



■ Agree (strongly / somewhat) ■ Neither agree nor disagree ■ Disagree (strongly/somewhat)

SAME ENVIRONMENT, DIFFERENT PERSPECTIVE



#3 Key Learning

Workplace bullying takes many forms, but it is not perceived with the same intensity by both genders.

Women report more intense experiences of undermining and microaggressions, which are often not recognised as bullying due to a lack of corporate mechanisms and fear of stigmatisation.



The big picture

Despite progress over time,

...women's position in society, within the family and in the workplace continuous to be perceived as "inferior" and "oppressed".

These perceptions reveal stark differences between men's and women's perspectives, alongside

...the striking phenomenon of internalised misogyny!

From cleaning to fintech: Where are Greek women today?

National Survey Results
2025

Thank you!

Want more info? Ask xenia@focus.gr

